



Quick Start Guide

Compatible only with TC-010-001

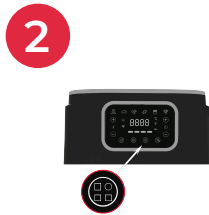
Introduction to the Team Cuisine Smart App

The Smart Air Fryer can be paired with your mobile device and controlled through the Team Cuisine Smart App, enabling you to cook, adjust and monitor the progress of your meals on the go, browse recipes, and save your favourites.

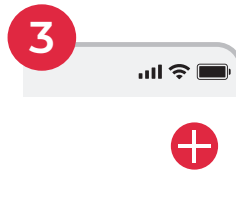
Pair with “Auto Scan”



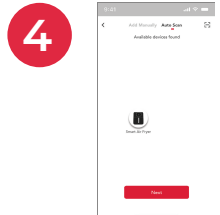
1 Turn on the Smart Air Fryer.



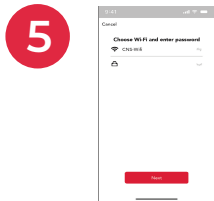
2 Press and hold the **Menu** button for 3 seconds until you hear a beep and the WiFi indicator begins to blink rapidly.



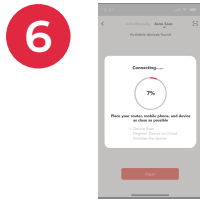
3 Open the Team Cuisine Smart App and tap “+” in the top right corner of the screen.
Note: Ensure the WiFi and Bluetooth of your mobile device are enabled.



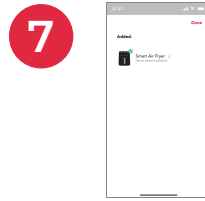
4 Select the **Auto Scan** tab. It will automatically detect the Smart Air Fryer and then tap next.



5 Select the same WiFi network of your mobile device and enter the password and tap next.

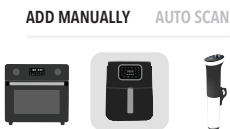


6 The Smart Air Fryer and the app will now begin the pairing process.



7 After successfully configuring the device, tap **Done** to finish the pairing.

Pair with “Add Manually”



Alternatively, the Smart Air Fryer can be paired using the Add Manually option on the app. Tap the “+” button on the top right corner and select the Add Manually tab. Find and select the Smart Air Fryer and then follow the instructions on the screen.

Note:
> Always select 2.4GHz WiFi network when there is an option.

Team Cuisine Smart App www.team-cuisine.com



The Team Cuisine Smart App requires iOS 10.0 / Android 10.0 and newer.

Version number: QSG-TC-010-001_V1

Apple and the Apple logo are trademarks of Apple Inc., registered in the U.S. and other countries. App Store is a service mark of Apple Inc., registered in the U.S. and other countries. Android and Google Play are trademarks of Google LLC. All other trademarks are properties of their respective owners.